

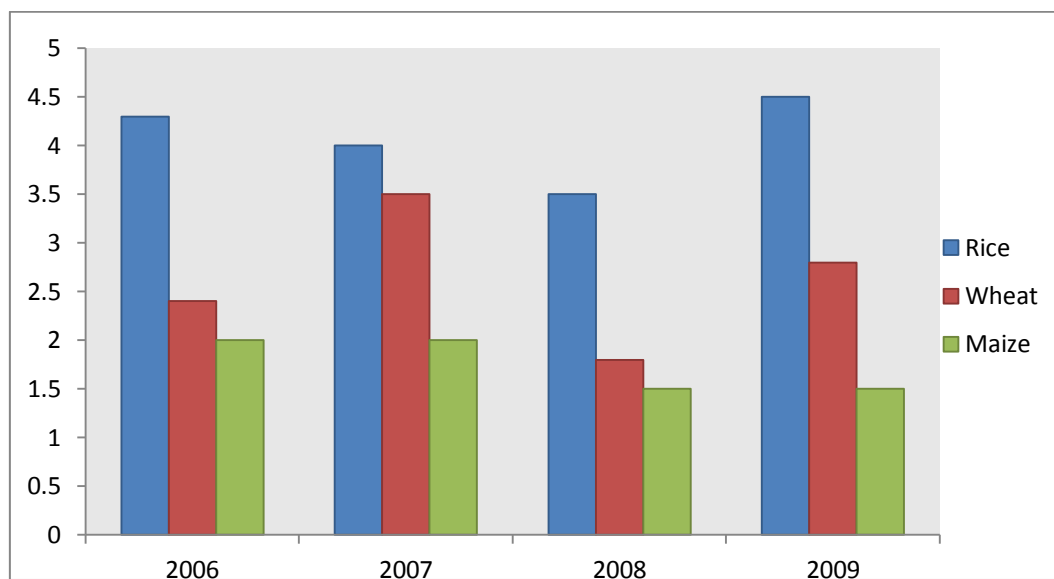


MATHEMATICS WORKSHEET

DATA HANDLING

The bar graph of the production of rice, wheat, maize (in lakh tonnes) in different years is as follows. Observe the bar graph given below and answer the following questions.

- (a) Which cereal had the highest successive production from 2006 and 2009?
- (b) Which cereal production was the lowest each year?
- (c) Which cereal was the second highest in the year 2007?
- (d) Calculate the total production of maize from 2006 and 2009.
- (e) What was the difference in the production of wheat in the 2007 and 2008?



Answers :-

(a) _____

(b) _____

(c) _____

(d) _____

(e) _____